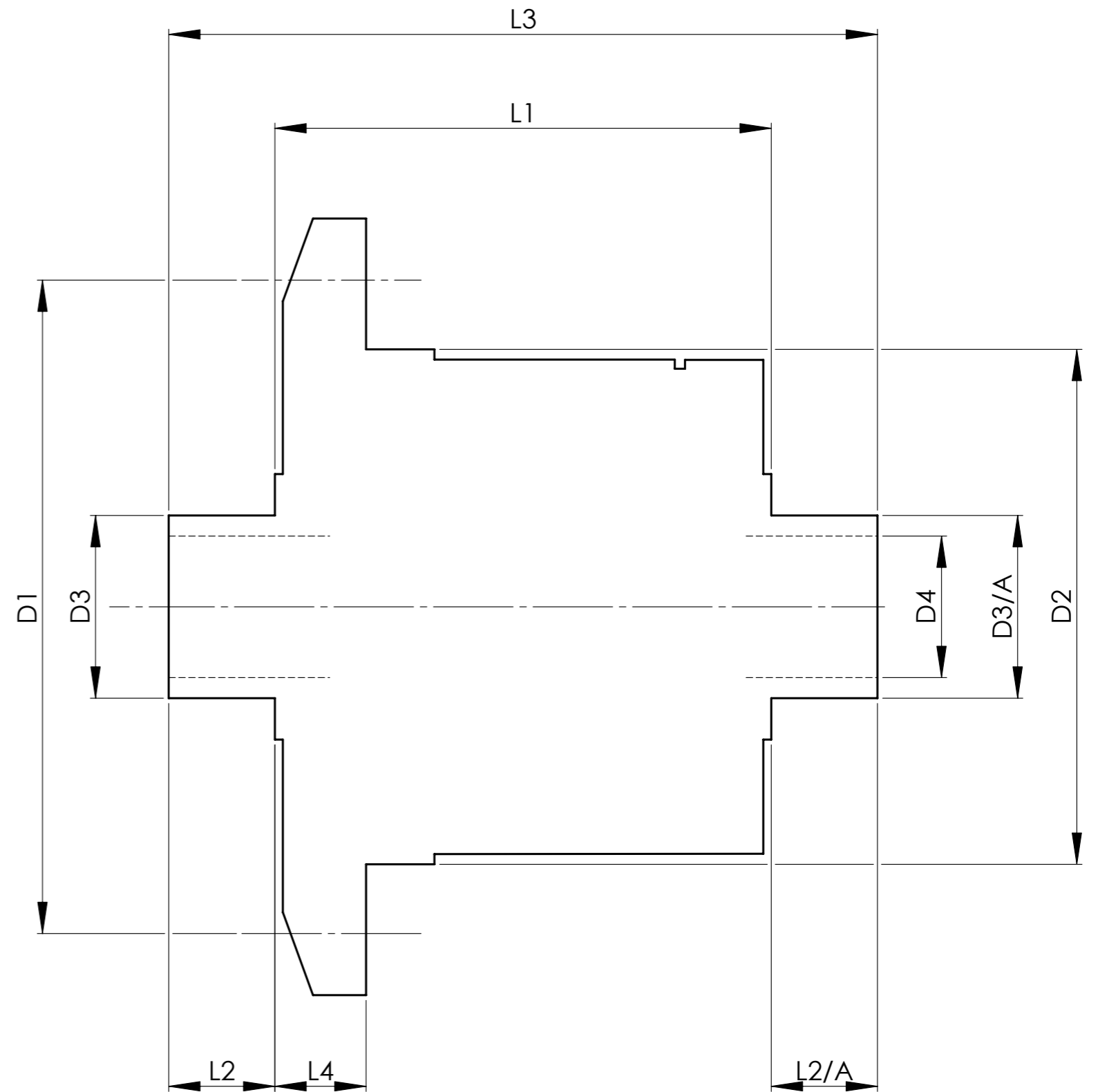


		INCH	MM
CROWN WHEEL BOLT PCD	D1	5.715	145.2
No. OF BOLTS		16	16
THREAD / THRO' HOLE		0.485	12.3
CROWN WHEEL SPIGOT DIA	D2	4.7642	121.0
BEARING DIA	D3	2.0886	53.1
	D3/A	1.9691	50.0
BEARING DISTANCE	L1	5.276	134.0
SPIGOT LENGTH	L2	0.827	21.0
	L2/A	0.825	21.0
OVERALL LENGTH	L3	6.928	176.0
BEARING/CROWN WHEEL	L4	0.536	13.6
BORE	D4	1.3786	35.0

DRIVE SHAFT SPLINE:-

No. OF TEETH	43
PITCH	32/64 D.P.
TYPE	FLAT ROOT SIDE FIT
PRESSURE ANGLE	30°



TITLE R.W.D. DIFF DATA SHEET.
SCALE 1:1 U.O.S. SHEET 1 OF 1

Drg. No. QDF13Q

Quaife Design & Development.

IF IN DOUBT, ASK.

THIS DRAWING OR DESIGN IS STRICTLY CONFIDENTIAL & THE COPYRIGHT THEREIN IS THE EXCLUSIVE PROPERTY OF RT QUAIFFE ENGINEERING LTD. AND MAY NOT BE USED COPIED OR EXHIBITED WITHOUT THEIR WRITTEN PERMISSION.

FINISH. MACH, GRIND@G
LIMITS. FRACT. ± 1/64".
DEC. ± 0.005".
MATERIAL.
TREATMENT.
ISSUE. 01 DATE. 29.1.07
DRAWN BY. J.P.D.

Used In. PORSCHE 997 DIFF.